

LATHROP

General Plan Update

Newsletter 3 April 2022

The Public Draft General Plan and EIR will soon be available for review!

In the Spring of 2022 the City of Lathrop will release the Draft General Plan and Draft EIR for public review and comment. The public is encouraged to review these documents and provide written comments to the City. The City will host a public workshop during the review period. Check the General Plan Website for updates:

www.lathrop.generalplan.org

What is a General Plan?

A general plan is designed to serve as a community's "constitution" or "blueprint" for future decisions concerning land use, infrastructure, public services, and resource conservation. All specific plans, subdivisions, public works projects, and zoning decisions made by the City must be consistent with the General Plan. **The General Plan provides guidance on reaching a future envisioned over a 20-year time horizon, through 2040.**

What is an EIR?

An Environmental Impact Report, or EIR, is a document that meets the requirements of the California Environmental Quality Act (CEQA). **The EIR provides an analysis of the potential environmental impacts of the Draft General Plan**, and provides the public, the Planning Commission, and the City Council with a tool to use during review and consideration of the Draft General Plan

What's covered in a General Plan?



Land Use

Establishes land use designations and patterns to support desired growth.



Circulation

Guides transportation decisions for autos, bikes, pedestrians, and transit.



Economic Development

Provides tools and strategies to strengthen and diversify the local economy.



Recreation and Resources

Plans for open spaces and parks, and includes measures to protect natural resources and promote sustainability.



Public Facilities

Guides services such as water, sewer, police, fire, and schools.



Safety

Addresses hazards such as fires, geologic hazards, and hazardous materials.



Noise

Addresses noise-generating and noise-sensitive uses such as residences and schools.



Health and Environmental Justice

Provides an integrated approach for environmental justice, healthy communities and social equity

General Plan Update Process

1 Identify community Priorities - Complete

Identify community Priorities
Visioning workshops to develop a long-term vision for the city and establish priorities.

2 Existing Conditions Report - Complete

Information on current conditions and trends..

3 Issues and Opportunities - Complete

Describe core values and identify community issues and opportunities based on community input, stakeholder outreach, and visioning workshops.

4 Land Use Alternatives - Complete

Prepare land use concept maps, based on input received from the community and City leadership.

5 Draft Goal and Policy Sets - Complete

Develop goals, policies, and actions to address identified issues and achieve desired land uses.

We Are Here!

6 Draft General Plan

Design a plan to reach the preferred vision of the city's future.

7 Environmental Impact Report

Analyze the environmental effects of implementing the General Plan.

8 General Plan Adoption

The Planning Commission and City Council will consider the General Plan at a series of public hearings.

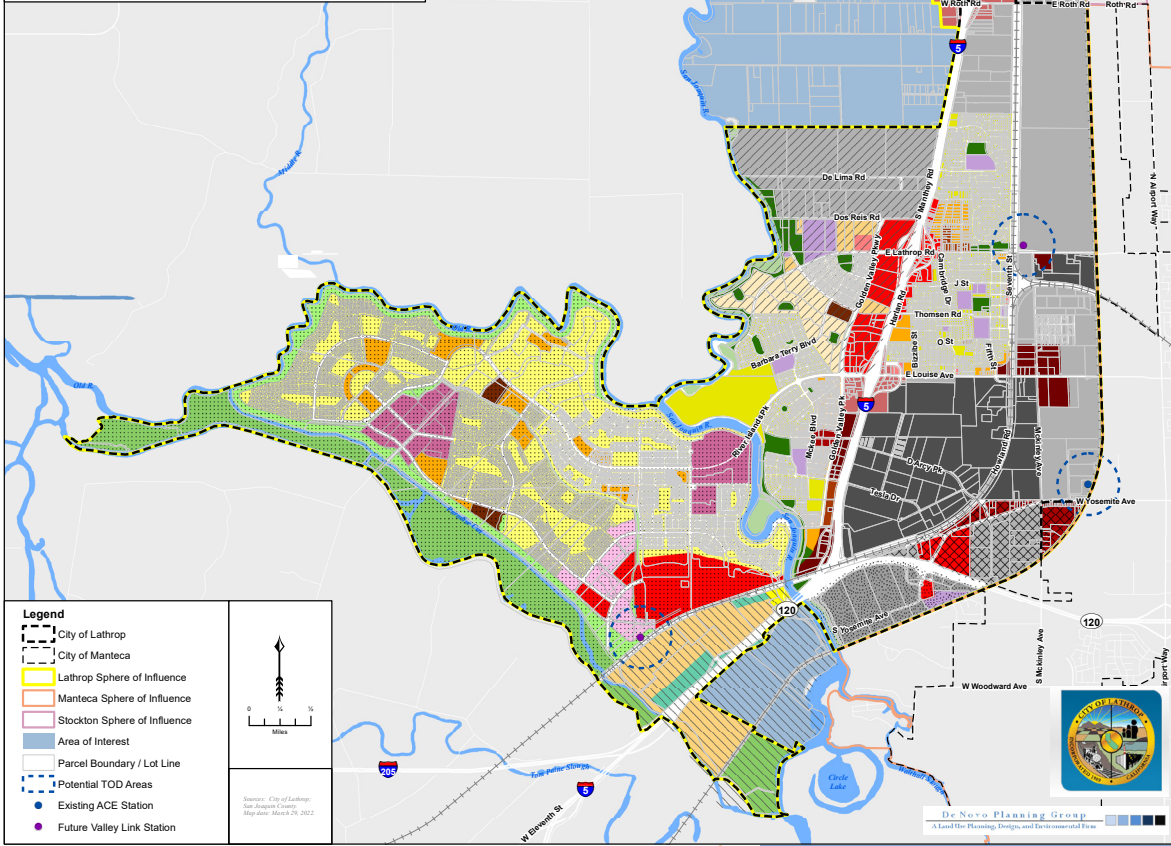
Preferred Land Use Map

In July 2021, the City Council provided final direction on revisions to the Preferred Land Use Map. **The Land Use Map identifies land use designations, including allowed uses and densities**, for each parcel in the City Limits. The Land Use Map adheres to the objectives identified throughout the Visioning and community engagement process to:

- » Provide a range of high-quality housing options;
- » Attract and retain businesses and industries that provide high-quality and high-paying jobs.
- » Continue to maintain and improve multimodal transportation opportunities
- » Maintain strong fiscal sustainability and continue to provide efficient and adequate public services
- » Address new requirements of State law
- » Address emerging transportation, housing, and employment trends



CITY OF LATHROP GENERAL PLAN
Proposed General Plan Map



Land Use Designations	
 	LD: Low Density Residential (1-7 du/A)
 	MD: Medium Density Residential (8-15 du/A)
 	HD: High Density Residential (16-25 du/A)
 	NC: Neighborhood Commercial
 	VC: Village Center
 	CC: Central Commercial
 	SC: Service Commercial
 	FC: Freeway Commercial
 	LI: Limited Industrial
 	GI: General Industrial
 	P/QP: Public/Quasi-Public
 	P: Park
 	OS: Open Space
 	VR-CL: Variable Density Residential (3-16 du/A)
 	HR-CL: High Density Residential (15-49 du/A)
 	R/MU-CL: Residential Mixed Use (10-40 du/A)
 	OC-CL: Office Commercial
 	NC-CL: Neighborhood Commercial
 	LI-CL: Limited Industrial
 	P/QP-CL: Public/Quasi-Public
 	P-CL: Park
 	OS-CL: Open Space
 	CO-LG: Commercial Office
 	SC-LG: Service Commercial
 	LI-LG: Limited Industrial
 	CO-SL: Commercial Office
 	LI-SL: Limited Industrial
 	P/QP-SL: Public/Quasi-Public
 	OS-SL: Open Space River/Levee Park
 	RL-RI: Residential Low (3-9 du/A)
 	RM-RI: Residential Medium (6-20 du/A)
 	RH-RI: Residential High (15-40 du/A)
 	RC-RI: Regional Commercial
 	TOD-RI: Transit-Oriented Development
 	MU-RI: Mixed Use
 	RCO/OS-RI: Resource Conservation/Open Space
 	OS-P-RI: Open Space/Public Uses
 	R-ST: Residential
 	RC-ST: Recreation Commercial
 	RCO-ST: Resource Conservation
 	UR-ST: Urban Reserve

Legend

- City of Lathrop
- City of Manteca
- Lathrop Sphere of Influence
- Manteca Sphere of Influence
- Stockton Sphere of Influence
- Area of Interest
- Parcel Boundary / Lot Line
- Potential TOD Areas
- Existing ACE Station
- Future Valley Link Station

Scale: 0 1/4 1/2 Miles

Source: City of Lathrop, San Joaquin County, Map date: March 28, 2022

Next Steps

Public Review of the Draft General Plan

The community is invited and encouraged to review and comment on the Draft General Plan. When reviewing the Draft General Plan, please consider the following questions:

Do the goals and policies reflect Lathrop's values and priorities, both now and into the future?

Are there specific goals and policies that you feel should be revised?

Are there key community issues that are not adequately addressed in the Draft General Plan?

Public Workshops

During the public review period, the City will host public workshops to review the Draft General Plan, answer public questions, and receive community feedback. Please check the General Plan website for dates and meeting information.

Public Hearings and Adoption

Following the public review and comment period for the Draft General Plan and Draft EIR, the Lathrop Planning Commission will conduct public hearings to consider a recommendation to adopt the General Plan. The City Council will then hold a series of public hearings to review public comments, finalize the General Plan, and adopt the General Plan. Once scheduled, public hearing dates will be posted to both the City of Lathrop website and the General Plan update website. Additional opportunities for public comment will be provided at the hearings.

The Draft General Plan and Land Use Map will be available for review on the website:

Lathrop.GeneralPlan.org

If you would like to be added to the General Plan Update mailing list, please contact Rick Caguiat, Assistant Director, at the City of Lathrop Community Development Department.

Rick Caguiat

390 Towne Center Drive, Lathrop, CA 95330

Phone (209) 941-7296

Email: rcaguiat@ci.lathrop.ca.us

Website: www.ci.lathrop.ca.us